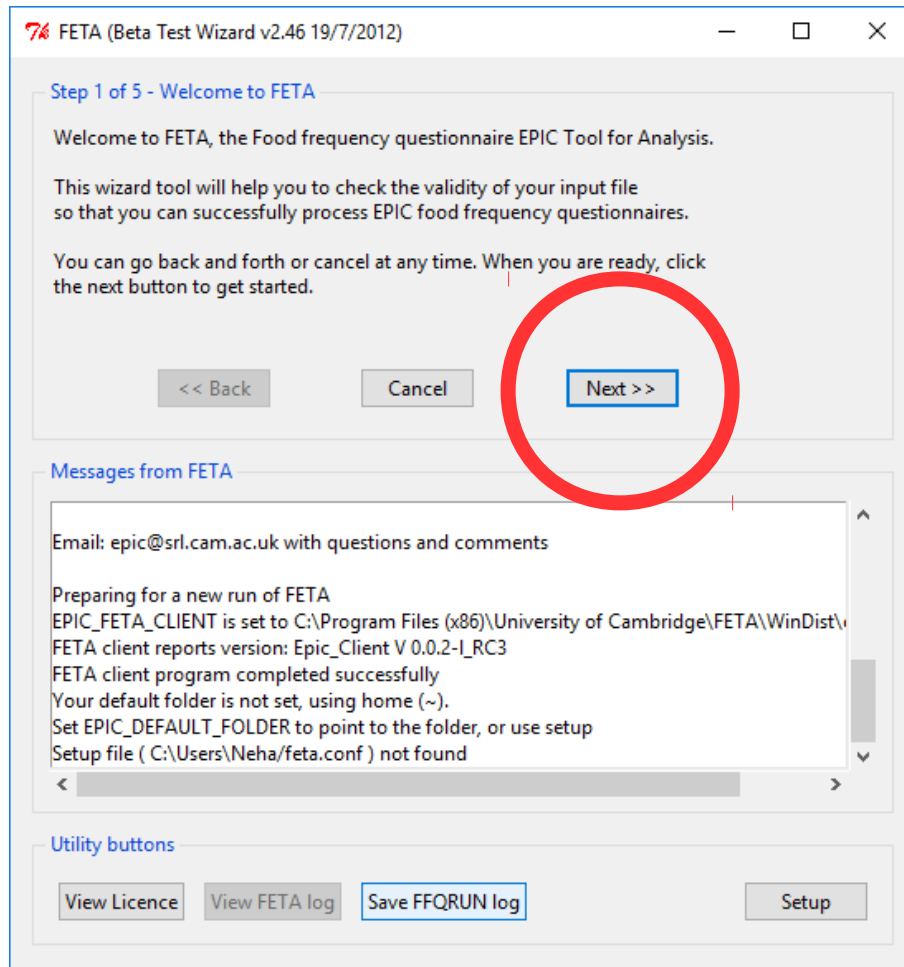


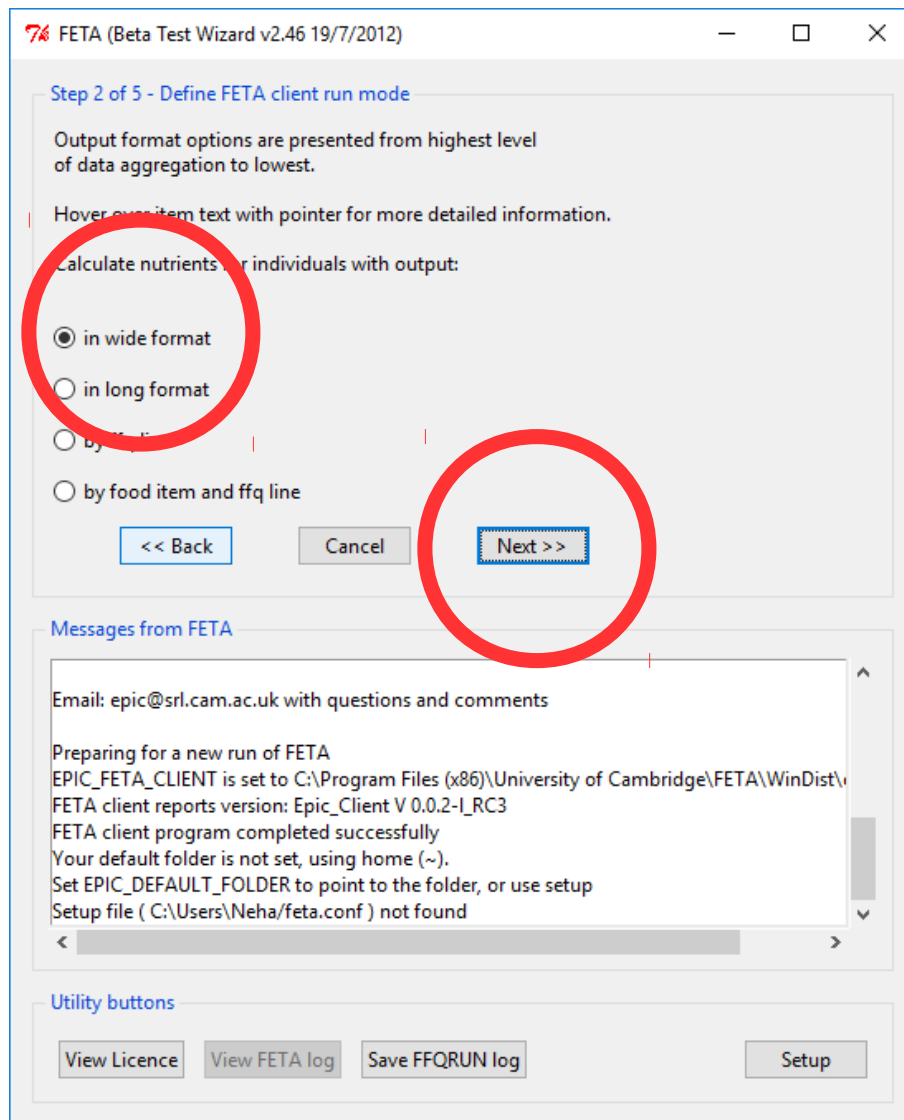
Steps to run FETA software

(Please refer to the installation guide first if you need to install FETA)

Run FETA, following the steps below (as shown in the screen shots)

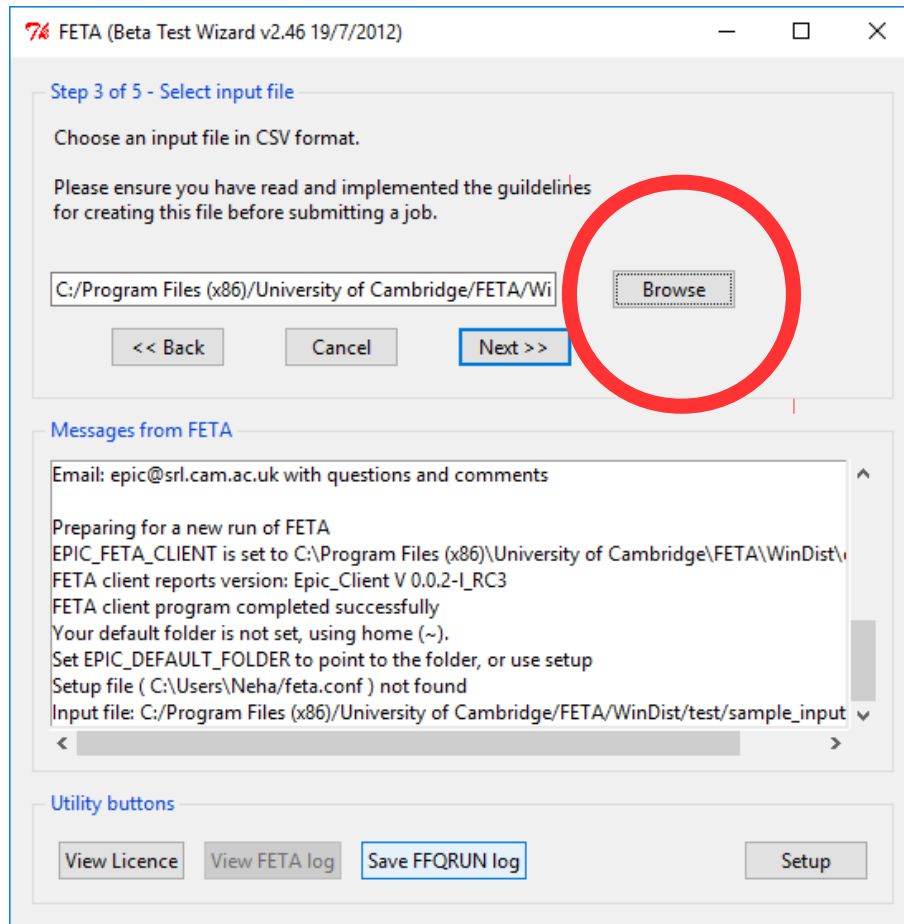


Press/Click Next button



Step 2: Choose a format. “Wide format” is usually the best one to choose.

Press/Click the Next button



Step 3: To select the input file, click Browse

If this is the first time you have used FETA, try our sample file. “sample_input.csv” is a file containing test data to give you an example of how your data should be formatted when using FETA software

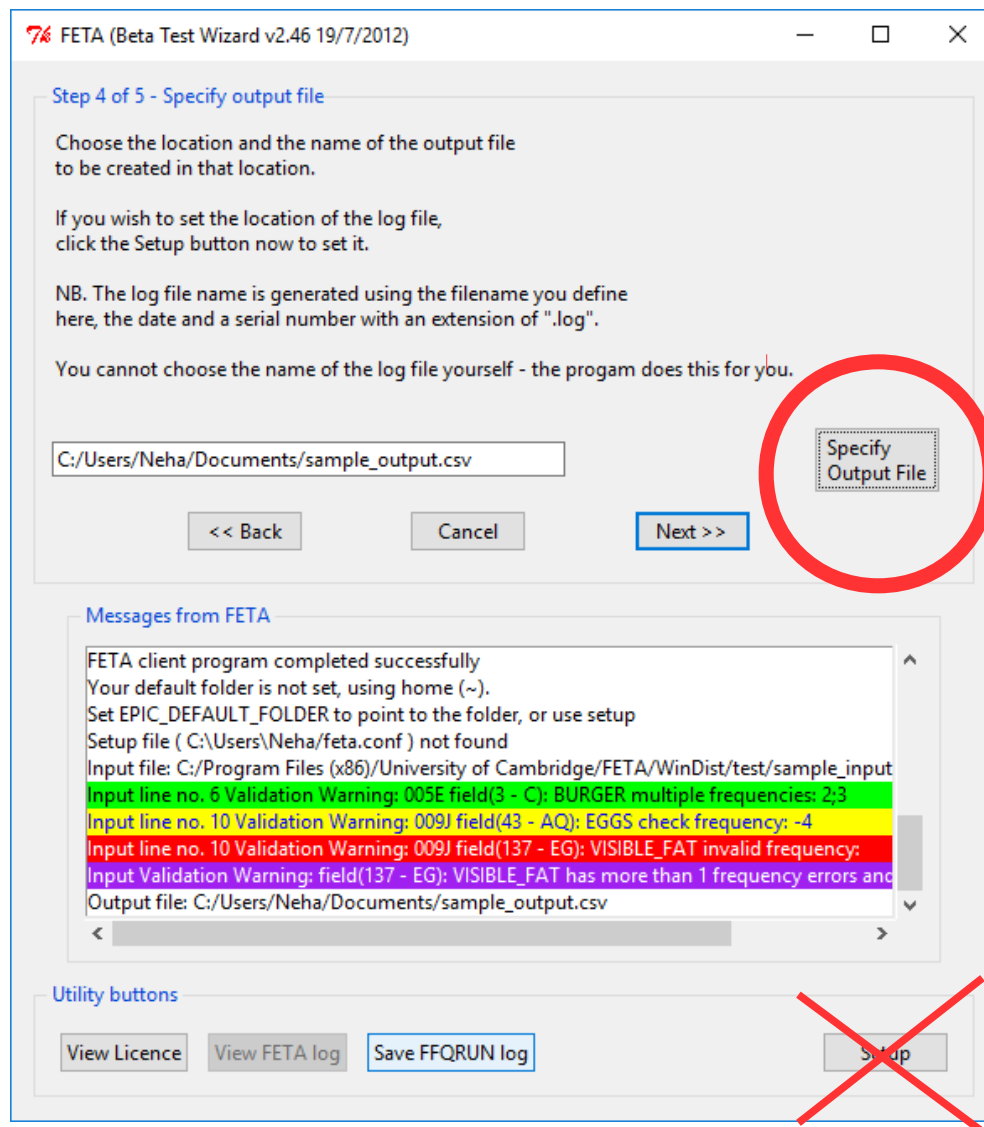
You can download the sample file from this link:

http://hoodedclaw.srl.cam.ac.uk/cgi-bin/countdown.cgi?sample_input.csv

You should also already have a copy at this location:

C:\Program Files (x86)\University of Cambridge\FETA\WinDist\test\sample_input.csv

Press/Click the Next button



Step 4: To select an output file:

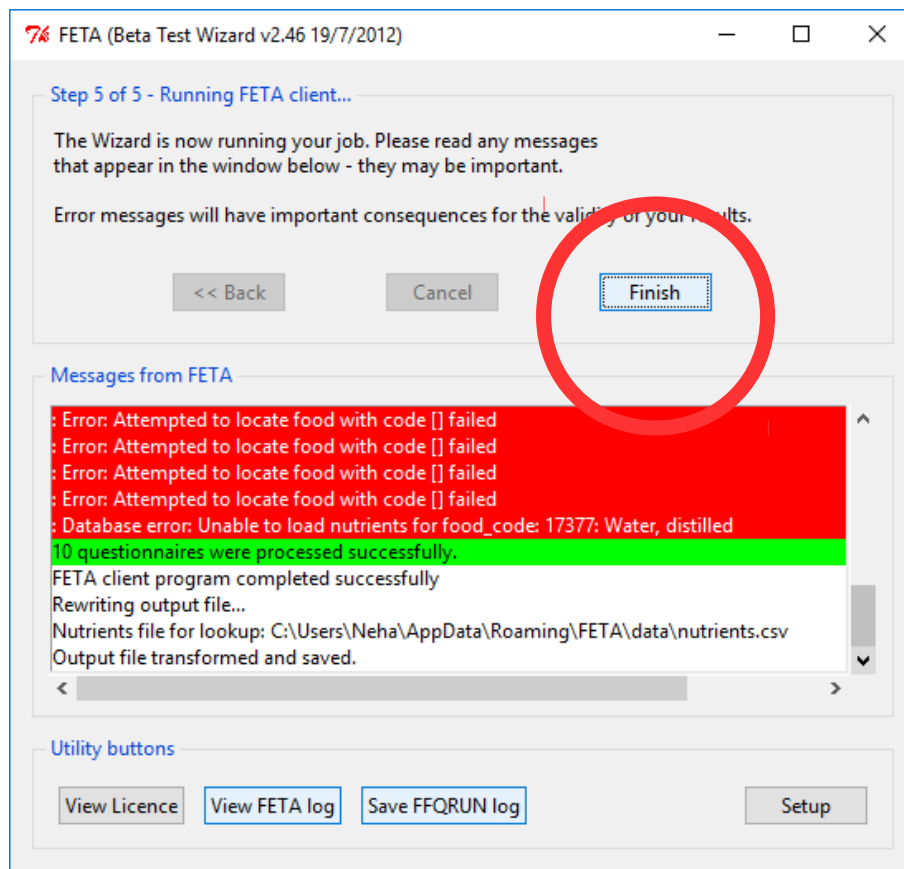
Click the “Specify Output File” button, and save the file in your Documents. You can give the file your choice of name, but please save the file using the extension .csv

e.g. C:/Users/Neha/Documents/sample_output.csv

The output file will contain your results after FETA has processed your original data

Tip: Don't click the Setup button. It does not work properly in FETA version 2.46

Press/Click the Next button



You have reached the end of the program procedure.

Tip: Don't worry about the strange messages that say "Error: Attempted to locate food with code [] failed". These warnings can be safely ignored

Click the Finish button

You can now check the results of your data in the file that you saved as an output file in Step 4.